

# Lucky Leprechaun

## BAG HEADER



Print, cut and assemble as instructed

**FOLD LINE** →

*\*Use craft knife to cut along the heavy dark outline above the fold line*

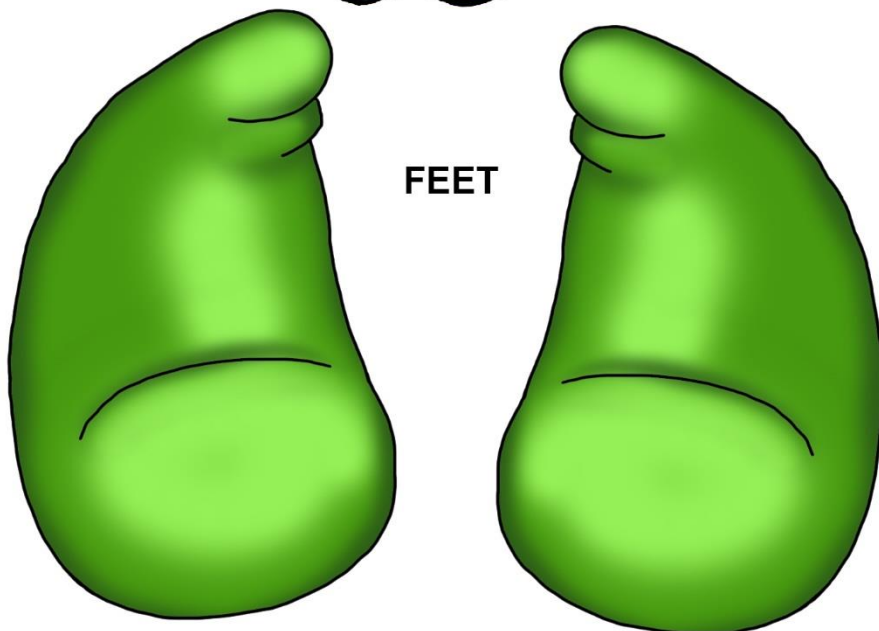
1. Cut out images
2. Fold the header and attach to the top of a filled bag
3. Attach feet to the front bottom edge of the bag
4. Tie a string to the tag and attach it to the character's hand.

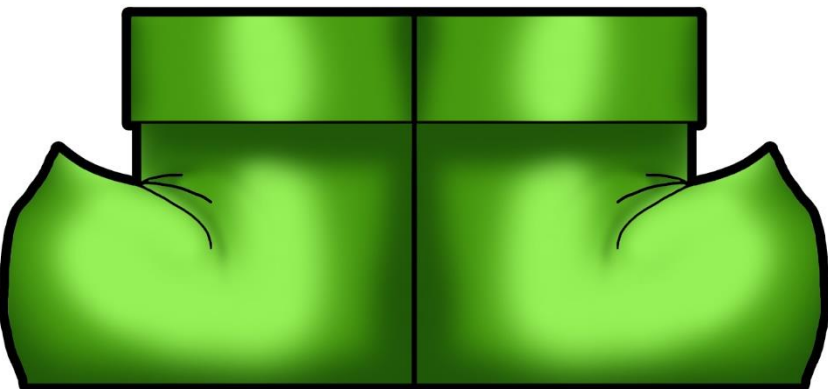
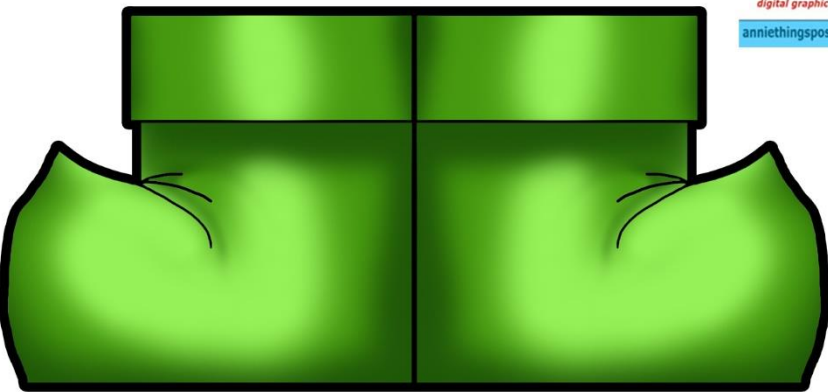


**TAG**



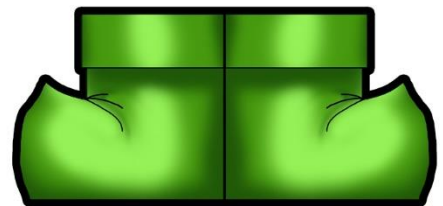
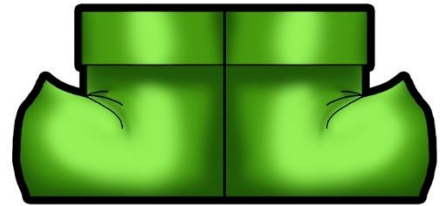
**FEET**





1. Print and then mount page on cardstock
2. Cut out the character pieces
3. Fold leg sections in half.
4. Place a toothpick, small skewer or plastic pick near the top of the folded legs before applying glue to secure in place.
5. Tape or glue a toothpick, skewer or plastic pick to the center lower back of the head section.
6. Poke the character pieces into anything!

## Character Pokes



**NOTE:** Cover the printed, mounted sheet with protective clear laminate or Contact paper if using pokes for food items!

# Lucky Leprechaun