

SUNNY MEADOWS

Tissue Box Project

© [Annie Lang](http://AnnieLang.anniethingspossible.com)
anniethingspossible.com

Add a little sunshine to your room... and SMILE to your day! The sample project features a wooden tissue box but you can also use [paper mache](#).

MATERIALS:

Wooden [tissue box](#) (7 3/4"x 5"x 5")

*black extra fine line permanent ink marker

Basic Supplies:

Soft lead pencil, tracing paper, sandpaper, tack cloth, 1" sponge brush for basecoating, small square cut from household sponge, brush basin, palette, paper towel, water

Brushes :

Angle Shader size 3/8, Flat Shader size 4
Pointed Round size 8 , Liner sizes 0/2,0,1

Acrylic Paint (DecoArt Americana™ Acrylic Paint brand used):
Lamp Black, Camel, Marigold , Arbor Green, Deep Teal, Antique Teal,
Coral Rose, DeLane's Cheek Color, Calypso Blue, Midnite Blue
Spray Acrylic Matte Sealer

PROJECT FOR PERSONAL USE ONLY. PATTERNS ARE NOT FOR RESALE



PREPARATION:

1. Trace 4 copies of the pattern onto tracing paper. Flip the paper over and then heavily retrace the lines pencil. Flip the patterns back over to the original side.
2. Sand the entire wood box with sandpaper.
3. Basecoat the inside of the box with *Marigold*, using the sponge brush. When dry, sand and then use tackcloth to remove excess dust.
4. Center each pattern onto each box side, making sure the bottom edge of the design rests along the bottom edge of the box. Retrace the lines, transferring the patterns onto the box sides.
5. Use sponge brush to paint the top of the box and the arched area above each motif with *Midnite Blue*. When dry, load the sponge square with *Calypso Blue*. Tap the sponge up and down on the palette to work the paint into the sponge. Apply the color over the basecoated areas using an up and down pouncing motion, allowing some of the basecoat to show through.

PAINTING PROCEDURE:

To “float” the shading color, dampen the brush with water. Touch one side of the brush into the paint and then sweep the brush back and forth on your palette, working the paint into the brush. Apply the color around the edges of the area you are working on as directed in your painting instructions.

Border Frames: Use #4 flat brush to paint the frame areas with *DeLane’s Cheek Color*. **Sunshine Areas:** Paint the sunshine face with the #8 round with *Marigold*. Use the #4 flat shader to paint the 5 sunshine rays with *Coral Rose*. Paint the 5 remaining background sections between the rays with *Marigold*. Load the angle shader with *Coral Rose* and float this shading color around the border edges of the sunshine face and then onto the rays around the inside border frame edges. Use the round brush to paint the nose with *DeLane’s Cheek Color* and then tap some of the color onto the cheek area. Use the #0 liner to paint the eyes with *Black*.

Far Distant Left Hill: Starting with the stripe on the left and working towards the right, paint every other stripe with *Deep Teal* and the remaining stripes with *Antique Teal*. Float some *Antique Teal* along the base of the hill.

Distant Right Hill: Working from left to right, paint every other stripe with *Delane's Cheek Color* and two remaining stripes with *Camel*. Float *Marigold* shading near the base of each camel stripe.

Front Left Hill: Paint every other stripe with *Marigold* and remaining stripes with *Deep Teal*. Float *Coral Rose* shading onto the marigold stripes and *Antique Teal* shading along the base of the deep teal stripes.

Foreground Hill: Starting with the stripes on the left and working towards the right, paint every other stripe with *Camel* and then float with *Marigold* shading. Remaining stripes are basecoated with *Midnite Blue*. When dry, float a line of *Calypso Blue* highlighting along the top edge border of each midnite stripe.

Trees: Basecoat all trees with *Antique Teal*. Use the #1 liner to add tiny *Deep Teal* highlight lines onto each tree.

FINISHING

6. **Outlining and Detail Work:** Outline and add all details and stitching lines with the Black fineline marker. You can also use a 18/0 liner brush and *Black* paint thinned to an ink consistency if you prefer, but lines won't be as uniform and precise.
7. Carefully spray the entire tissue box with 2-3 coats of sealer, drying between coats.

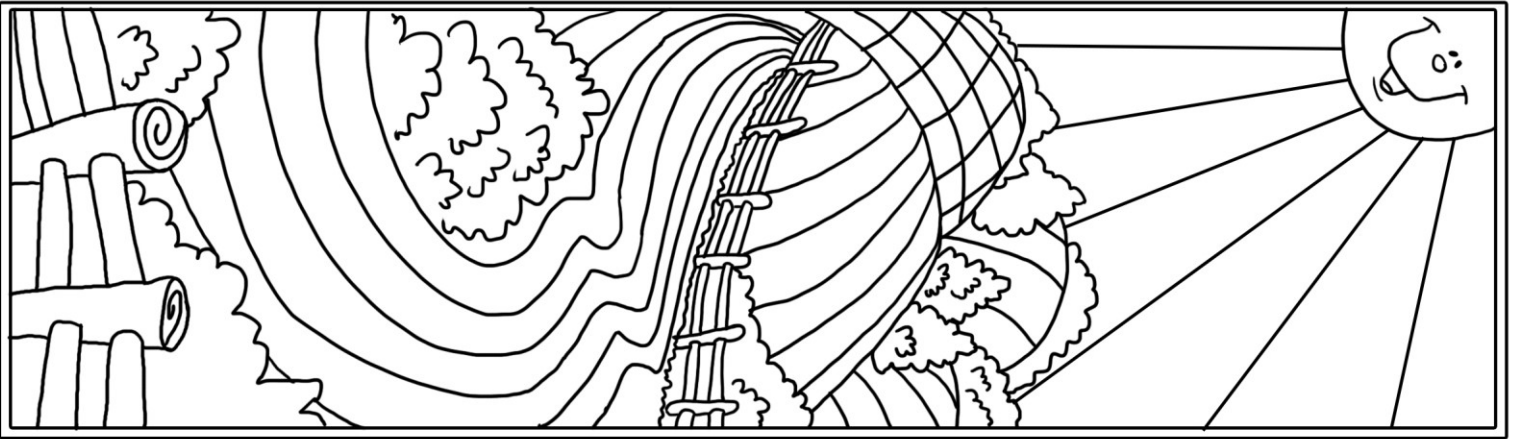
PERSONAL USE ONLY! PATTERNS ARE NOT FOR RESALE

BONUS PROJECT PATTERN

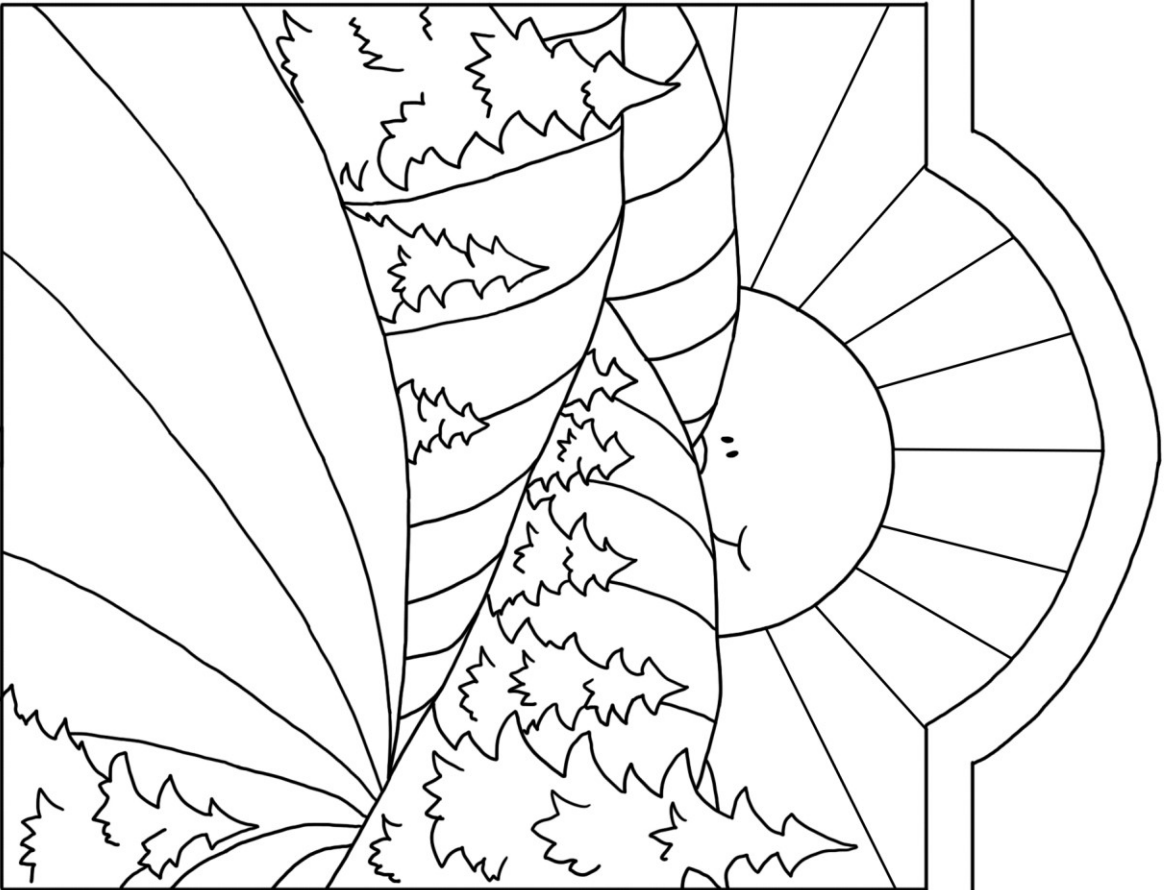
Sunny Friends 8x10 Canvas



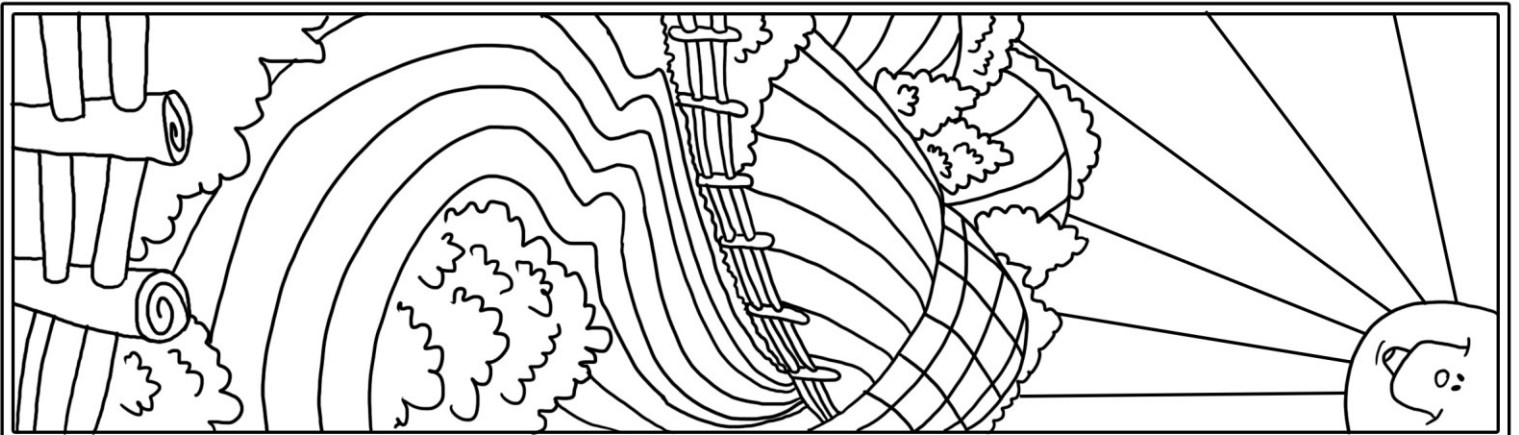
Create this whimsical design on canvas following the same procedure as described for the tissue box using the colors of your choice. This is the original image I used to create a greeting card design and later used it to create the featured wood tissue box cover to use in my studio. Enjoy!

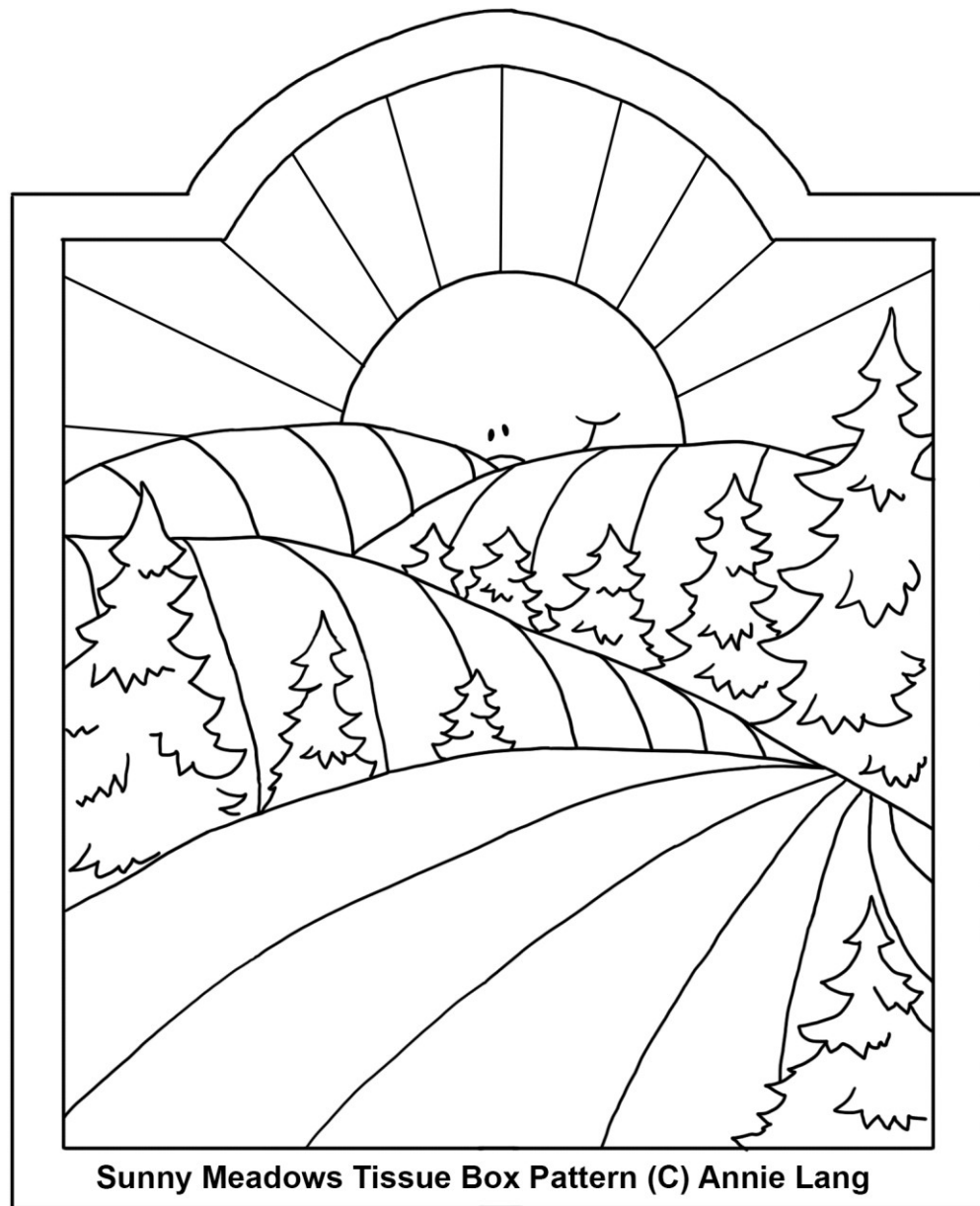


SMILE



Sunny Friends Pattern for 8x10 Canvas (C) Annie Lang





PERSONAL USE ONLY! PATTERNS ARE NOT FOR RESALE

For more whimsical line art patterns and creative printables by Annie Lang,
Just visit [Annie Things Possible](http://AnnieThingsPossible.com) and **Make Something FUN Today!**

